

INFINITE RESIDENCE



WITH PLANNING PERMIT

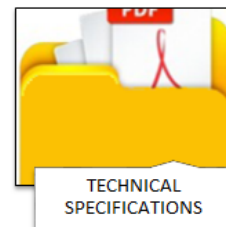


“INFINITE RESIDENCE” in Livadia

“Infinite Residence” is located in a quiet area of Livadia, Larnaca, with closing distance to American University of Cyprus (AUCY) and Dekelia sea.

It is a 2-floor building consisting of 1 & 2 bedroom of spacious apartments and penthouse apartments with roof terraces with sea view.

The project is strategically located, nearby local amenities with attractive prices, ideal for families and with walking distance from the sea







PROVISION FOR
AIR
CONDITIONING



COVERED
PARKING



1.5KM TO THE SEA



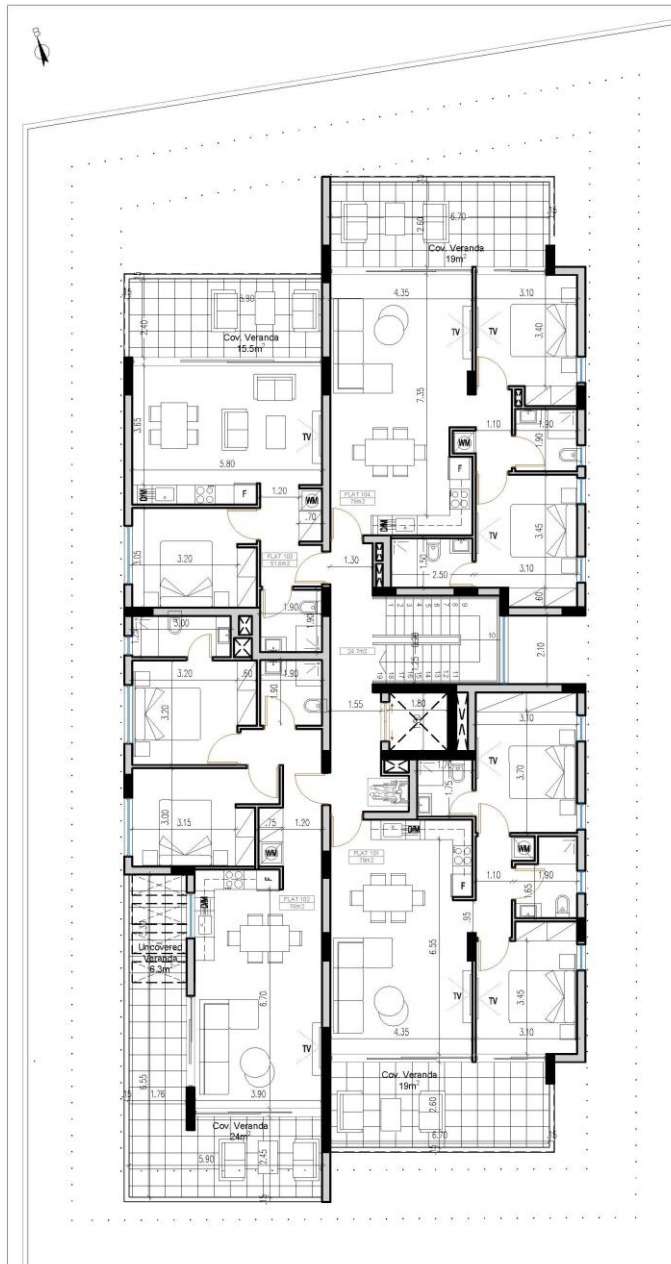
15 MIN TO
AIRPORT

APT NO.	FLOOR LEVEL	BEDS	BATH/R	INTERNAL AREA m ²	COVERED BALCONY m ²	ROOF GARDEN m ²	STORAGE & PARKING	TOTAL AREA m ²
101	1st	2	2	78.00	19.00	0.00	YES	97.00
102	1st	2	2	78.00	24.00	0.00	YES	108.30
103	1st	1	1	51.60	15.50	0.00	YES	67.10
104	1st	2	2	79.00	19.00	0.00	YES	98.00
201	2nd	2	3	78.00	19.00	65.00	YES	162.00
202	2nd	2	3	78.00	24.00	56.00	YES	158.00
203	2nd	1	2	51.60	15.50	40.00	YES	107.10
204	2nd	2	3	79.00	19.00	65.00	YES	163.00

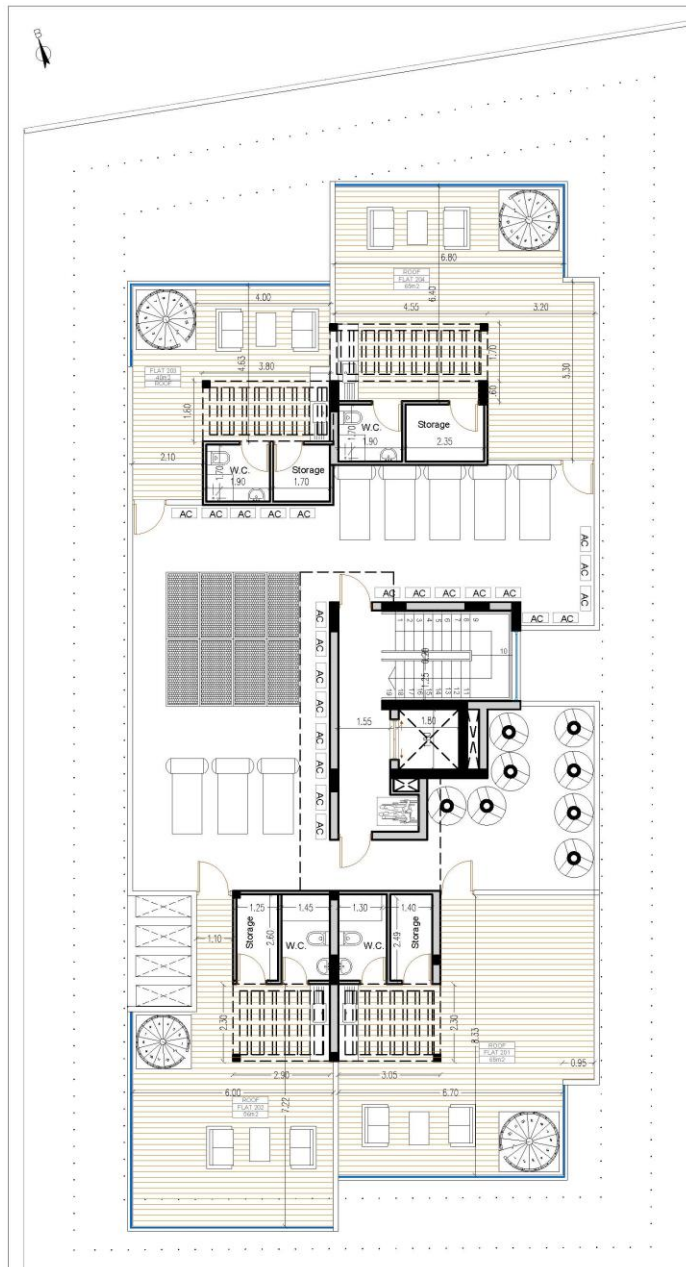
- 1- & 2-bedrooms apartments
- Penthouses with Terraces
- Spacious apartments
- Strategic Location
- Distance to the beach 1km



GROUND FLOOR PLAN



FIRST FLOOR PLAN



ROOF FLOOR PLAN



PHONE

+357 24258333
77787009
+357 97644024



ADDRESS

Gladstonos 1 Office
1, Panayiotio Megaro,
6023 Larnaca, Cyprus



EMAIL

info@dextekconstructions.com



WEBSITE

www.dextekgroup.com

CONTACT US

